

AGENDA

Meeting: Bradford on Avon Area Board
Place: St Margaret's Hall, Bradford on Avon
Date: Wednesday 20 November 2024
Time: 7.00 pm

Including the Parishes of: Atworth, Bradford on Avon, Holt, Limpley Stoke, Monkton Farleigh, South Wraxall, Staverton, Westwood, Wingfield, Winsley.

The Area Board welcomes and invites contributions from members of the public. The Chairman will try to ensure that everyone who wishes to speak will have the opportunity to do so.

If you have any requirements that would make your attendance at the meeting easier, please contact your Democratic Services Officer.

Please direct any enquiries on this Agenda to Stuart Figini , direct line 012225 718221 or email stuart.figini@wiltshire.gov.uk

All the papers connected with this meeting are available on the Council's website at www.wiltshire.gov.uk

Press enquiries to Communications on direct lines (01225) 713114 / 713115.

Wiltshire Councillors

Cllr Sarah Gibson MP, Bradford on Avon South
Cllr Johnny Kidney, Winsley and Westwood
Cllr Trevor Carbin, Holt and Staverton (Vice-Chairman)
Cllr Tim Trimble, Bradford-on-Avon North (Chairman)

Recording and Broadcasting Information

Wiltshire Council may record this meeting for live and/or subsequent broadcast. At the start of the meeting, the Chairman will confirm if all or part of the meeting is being recorded. The images and sound recordings may also be used for training purposes within the Council.

By submitting a statement or question for a meeting you are consenting that you may be recorded presenting this and that in any case your name will be made available on the public record. The meeting may also be recorded by the press or members of the public.

Any person or organisation choosing to film, record or broadcast any meeting of the Council, its Cabinet or committees is responsible for any claims or other liability resulting from them so doing and by choosing to film, record or broadcast proceedings they accept that they are required to indemnify the Council, its members and officers in relation to any such claims or liabilities.

Details of the Council's Guidance on the Recording and Webcasting of Meetings is available on request. Our privacy policy can be found [here](#).

Parking

To find car parks by area follow [this link](#).

Public Participation

Please see the agenda list on following pages for details of the items for discussion. The Area Boards welcome public participation and the Chairman will try to ensure that everyone has the opportunity to participate where possible. To discuss matters not on the agenda, please contact the officer named on the front page, ahead of the meeting.

For extended details on meeting procedure, submission and scope of questions and other matters, please consult [Part 4 of the council's constitution](#).

The full constitution can be found at [this link](#).

Our privacy policy is found [here](#).

For assistance on these and other matters please contact the officer named above for details

Area Board Officers

Strategic Engagement & Partnerships Manager (SEPM) – Liam Cripps -

Liam.Cripps@wiltshire.gov.uk

Engagement and Partnership Lead – Caroline LeQuesne -

Caroline.LeQuesne@wiltshire.gov.uk

Democratic Services Officer – Stuart Figini – stuart.figini@wiltshire.gov.uk

Items to be considered	Time
<u>Items to be considered</u>	
1 Apologies for Absence	
2 Minutes (<i>Pages 1 - 6</i>) To approve and sign as a correct record the minutes of the meeting held on 18 September 2024.	
3 Declarations of Interest To receive any declarations of disclosable in terests or dispensations granted by the Standards Committee and Monitoring Officer.	
4 Chairman's Announcements The Chairman will give an update on outcomes and actions arising from previous meetings of the Area Board	
5 Information Items (<i>Pages 7 - 14</i>) The Board is asked to note the following Information items: <ul style="list-style-type: none"> • Community First • Update from BSW Together (Integrated Care System) 	
6 Flooding Resilience To receive a presentation from Renate Malton, Wiltshire Council Flood Resilience Officer about how householders can make their homes and themselves more resilient to flooding.	
7 Flooding in Bradford on Avon To receive a presentation from Danny O'Callaghan, Community Emergency Volunteer, about the role of CEV's in relation to flooding issues.	
8 Bradford on Avon - Wild Waters Festival - June 2025 To receive an update from Richard Mann on the Wild Waters Festival being held in June 2025.	
9 Partner and Community Updates (<i>Pages 15 - 32</i>) <u>Verbal Updates</u> To receive any verbal updates from representatives, including: <ul style="list-style-type: none"> • Parish and Town Councils • Climate Friendly Bradford • Wiltshire Music Centre 	

- Health and Wellbeing
- Local Youth Network

Written Updates

The Board is asked to note the following written and online updates attached to the agenda: -

- Bradford on Avon Town Council
- Neighbourhood Policing Team to include a road safety update
- Dorset & Wiltshire Fire and Rescue Service – Quarterly update - <https://www.youtube.com/watch?v=wHP0Q6ToS2s>

10 **Area Board Funding** (Pages 33 - 36)

To note the remaining budgets and to consider any applications for funding, as detailed in the attached report and summarised below:

Remaining Budgets if all grants are agreed:

Community Area Grant	Older & Vulnerable	Young People
£1,860	£600	-£472

Area Board Initiatives:

Ref/Link	Grant Details	Amount Requested
	n/a	

Community Area Grants:

Ref/Link	Grant Details	Amount Requested
	n/a	£xxx

Older & Vulnerable Grants:

Ref/Link	Grant Details	Amount Requested
ABG2005	Bradford on Avon Dementia Action Alliance – Quarterly Activities information leaflet for seniors	£400
ABG2006	Bradford on Avon Dementia Action Alliance – Christmas event for seniors	£500

Young People Grants:

Ref/Link	Grant Details	Amount Requested
ABG2023	Mighty Girls CIC – MG youth activities 2024 and 2025	£2,500

Delegated Funding

The Board is asked to note any funding awards made under the Delegated Funding Process, by the Strategic Engagement & Partnership Manager, between meetings due to matters of urgency:

- None

Further information on the Area Board Grant system can be found [here](#).

11 **Local Highway and Footpath Improvement Group (LHFIG)** (Pages 37 - 62)

To note the minutes and consider any recommendations arising from the last LHFIG meeting held on 21 October 2024, as set out in the attached report.

12 **Urgent items**

Any other items of business which the Chairman agrees to consider as a matter of urgency.

13 **Future Meeting Dates**

Future Meeting Dates (7.00-9.00pm):

- 19 March 2025
- 20 May 2025
- 2 July 2025

For information on applying for a grant or grant application deadlines for these meetings, contact the Engagement and Partnership Lead, Caroline.LeQuesne@wiltshire.gov.uk

MINUTES

Meeting: Bradford on Avon Area Board
Place: St Margaret's Hall, Bradford on Avon
Date: 18 September 2024
Start Time: 7.00 pm
Finish Time: 8.30 pm

Please direct any enquiries on these minutes to:

Stuart Figini,(Tel): 012225 718221 or (e-mail) stuart.figini@wiltshire.gov.uk

Papers available on the Council's website at www.wiltshire.gov.uk

In Attendance:

Wiltshire Councillors

Cllr Sarah Gibson MP, Cllr Johnny Kidney, Cllr Trevor Carbin (Vice-Chairman) and Cllr Tim Trimble (Chairman)

Wiltshire Council Officers

Liam Cripps – Strategic Engagement & Partnership Manager
Dom Argar – Technical Support Officer
Stuart Figini – Senior Democratic Services Officer

Partners

Insp Any Lemon - Wiltshire Police

Total in attendance: 15

<u>Minute No..</u>	<u>Summary of Issues Discussed and Decision</u>
28	<p><u>Apologies for Absence</u></p> <p>There were no apologies.</p>
29	<p><u>Minutes</u></p> <p><u>Decision</u> The minutes of the meeting held on 5 June 2024 were agreed as a correct record and signed by the Chairman.</p>
30	<p><u>Declarations of Interest</u></p> <p>There were no declarations of interest.</p>
31	<p><u>Chairman's Announcements</u></p> <p>The Chairman provided an update on the following matters:</p> <ul style="list-style-type: none"> • Update on the Families and Children’s Transformation (FACT) Family Help Project – the written update was noted. • Update on Families and Children’s Transformation (FACT) Transitional Safeguarding Project – the written update was noted • Overview of Wiltshire Youth Council – the written briefing was noted. • Gypsies and Travellers Development Plan Consultation – Details of the engagement events were noted along with the written update.
32	<p><u>Information Items</u></p> <p>The Area Board noted the following information items:</p> <ul style="list-style-type: none"> • Community First – the written update was noted • Healthwatch Wiltshire – the written update was noted • Update from BSW Together (Integrated Care System) – the written update was noted
33	<p><u>Community Transport</u></p> <p>The Chairman welcomed John Ruderman, Melksham Community Transport Coordinator who provided detail about Melksham Area Community Transport and its impact on the local community. Mr Ruderman commented on the following:</p> <ul style="list-style-type: none"> • Established over 20 years ago with one transit minibus • Detailed how the organisation is structured, including the roles of the Chairman, Treasurer, Transport Manager, 4 paid drivers and trustees

	<ul style="list-style-type: none"> • Expansion of the vehicle fleet to 5 • The services currently provided to schools and the local community. • Highlighted issues with funding, recruiting drivers and the application for permits to run the buses. <p>The Area Board thanked Mr Ruderman for his presentation and all the work undertaken in the local community. Members indicated that they would be keen for the transport services to be expanded into Bradford on Avon as it appeared there was sufficient demand from residents. It was noted that the use of EV vehicles were not a viable option for the service to the initial financial outlay, length of lease and access to vehicle charging points.</p>
34	<p><u>Partner and Community Updates</u></p> <p><u>Verbal Updates</u></p> <ul style="list-style-type: none"> • Wingfield Parish Council – the written update published in the agenda supplement was noted. • Climate Friendly Bradford – The Area Board were informed that there are now eight action groups, two sustainable fashion shows have been held, the Energy Group has been awarded a £10,000 grant from Futureproof as a part of its Local Energy Advice Demonstrator Programme which is also supporting two members of the Energy Group to complete Domestic Retrofit Advice training, • Wiltshire Music Centre - there was no report. • Health and Wellbeing – there was no report. • Local Youth Network – there was no report. <p><u>Written Updates:</u></p> <ul style="list-style-type: none"> • Bradford on Avon Town Council – An update was provided about Poulton Play Park Area and the work taking place to secure additional funding to complete the project, and consideration of the initial traffic management scheme for Bradford on Avon Town Centre at Full Council on 24 September 2024. • Neighbourhood Policing Team <p>The Area Board received a written update and presentation from Insp Andy Lemon, which included rural village engagement, routine speed gun patrol, youth centre visits, tackling rural crime, detail about crime statistics between June and August 2024 compared to statistics for June to August 2023 and an update on road safety.</p>

	<p>The Area Board and residents commented on the fall in violent crime over the reporting period, recent traffic collisions and possible causes, tackling bicycle theft, engaging with community speed watch to increase road safety and report of idling vehicles.</p>
35	<p><u>Area Board Funding</u></p> <p>The Area Board considered a number of applications for Community Area Grants and Young People Grants and heard from the applicants.</p> <p>Resolved:</p> <p>1. Community Area Grants:</p> <ul style="list-style-type: none"> • Atworth Village Hall and Recreation Ground – to award £3,000 (£700 from the Older and Vulnerable budget and £2,300 from the Community Area Budget) towards – lighting in the Atworth Village Hall Car Park. <p>2. Young People Grants:</p> <ul style="list-style-type: none"> • Bradford on Avon Community Area Network - to award £2,500 towards – Young Futures
36	<p><u>Local Highway and Footpath Improvement Group (LHFIG)</u></p> <p>The Area Board received the notes of the LHFIG meeting held on 22 July 2024. They also heard from Andy Kelly who commented on a number of Schemes, in particular, A36 and the impact on Bradford on Avon following its temporary closure, the TRO for Wine Street, the B3108 to Hartley Farm and general speeding issues in Bradford on Avon.</p> <p>Resolved:</p> <p>To receive the notes of the meeting held on 22 July 2024.</p>
37	<p><u>Urgent items</u></p> <p>The Area Board received a presentation from Brian Firth on behalf of Keep it Green BoA about the impact on residents of Bradford on Avon of the site formerly used as a golf course, and for several decades prior as a landfill site, being listed as a reserved site for potential development in the draft Local Plan. Mr Firth indicated that the site is inappropriate to include as a reserve site, and asked for the site to be removed with immediate effect.</p> <p>Members thanked Mr Firth for attending the Area Board and suggested that he should submit a letter of representation to the Government consultation about 'Proposed reforms to the National Planning Policy Framework and other changes to the planning system' prior to the consultation closing on 24 September 2024.</p>

38

Future Meeting Dates

The Area Board noted that the next meeting would be held on 20 November 2024 between 7.00pm and 9.00pm at St Margarets Hall, Bradford on Avon.

Christmas Opening Hours



The Community First office will close for the festive period at 4pm on Tuesday 24th December 2024 and will reopen at 9am on Thursday 2nd January 2025.

On behalf of our team, wishing you a very Merry Christmas and a Happy New Year.

Have your say on homecare services in Wiltshire

Wiltshire Council is conducting a comprehensive review of its care at home/domiciliary care frameworks, with the aim of shaping the future of homecare services across the county. This review will contribute to the development of an options proposal for future commissioning in 2026.

The council is eager to hear from those who receive care at home, whether their care is council-funded or self-funded, as well as from carers, families, and care providers.

The feedback collected will help inform how care services can best support people in their homes, how to improve the experience of finding care, and how to assist people in staying at home longer. The consultation is for adults (18+), children and young people, and adults with mental health needs, learning disabilities, or autism.

Key areas of feedback:

- What do people need and want from care at home?
- How does care work best for individuals?
- How can the council assist people to remain at home for longer?
- What are people's experiences of finding care and working with the council when care is funded?
- How does community support help people stay at home?
- What is the experience of unpaid carers in working with care providers?
- Looking ahead, how do people see the future needs of homecare changing?

How to get involved:

Voice It, Hear It is leading the consultation and engagement on behalf of Wiltshire Council. To ensure your voice is heard, we would like to invite homecare users, carers, and care providers to participate in this important consultation. Your voice matters!

Take our online survey: <https://survey.zohopublic.eu/zs/YgBPRq>

Book a 1-to-1 telephone consultation: (voice@communityfirst.org.uk)

For more information or to get involved, please contact:

voice@communityfirst.org.uk

Reminder - Community Transport Directory

If you work with individuals who need help with transport, please let them know about the Community Transport Directory. People who need help from their local Link Scheme or Community Minibus Group should contact the organisation directly.

Our directory has a list of contact details and can be found here:

<https://www.communityfirst.org.uk/transport/directory/>

Carers Together Wiltshire

Carers Together Parent Carer Lead Jo is hosting two sessions for parent carers in December. Please see below for the details and share with parent carers so they are aware of the support on offer as well as our monthly parent carer newsletter.

- **Wednesday 4th December 2024** - Face to face support group (10.30am-12pm) at the Cosy Club in Salisbury. No need to book, just drop in.
- **Thursday 19th December 2024** - Virtual evening group (7-8pm) Christmas quiz. Please email Jo for the link (jhculley@communityfirst.org.uk)

All parent carers are welcome to attend.

Our parent carer newsletter contains information, events and resources for parent carers in Wiltshire. If you know another parent carer who could benefit from the newsletter, please send them the link so they can subscribe: <https://mailchi.mp/93192f1024d4/parent-carers-newsletter>

Oxenwood 2025 School Holiday Clubs

Join us at Oxenwood Outdoor Education Centre for an action-packed, school holiday adventure with our new holiday clubs launching in February 2025.

Activities include:

Paddle sports - From April onwards and will include an introduction to Stand up Paddleboard and canoeing. The equipment to be used, the dangers that could be encountered (and how to not get in that situation in the first place!) paddle strokes and self-rescue. Ensuring you get the skills necessary to enjoy and safe and fun day on the water

Mountain biking - Learn the skills necessary to conduct repairs and identify faults with your bike, skill-based sessions designed to make better riders of all abilities, journeys out from the centre teaching the skills for moving across country safely and added basic navigation.

Bushcraft - Could you fend for yourself without any home comforts? How would you get on if you were lost or stranded in unknown territory? This day will teach you to get to grips with a few vital survival skills that could keep you alive and get you home in one piece. Learn how to prepare yourself for the unexpected, find water and make it safe, prepare and cook game, build a shelter, make fires for warmth and cooking and live in harmony with nature. You will also learn how to make distress signals for rescue or to navigate your way home.

Targets and trajectories - This day will involve various shooting techniques, utilising archery, olympic style air rifle, snap barrel air rifle and BB guns. The day will cover how to safely use all systems, how to zero your rifles, utilise alternate point of aim, how to fire from different positions and learn how to achieve the maximum points on offer every time!

History / theme days - The British Isles boasts a long and proud history and what better way to explore this history as becoming part of it! During our history day you will find out what its like to be drilled into shape as a Roman Legionnaire or discover how the Vikings became a feared invader of our islands, this immersive experience will ensure you leave here ready to invade and pillage!

Multiple activity day - This will incorporate all activities available during the week, condensed to give the attendees a taste of each. This will incorporate, bushcraft, mountain biking, riles shooting, Archery and climbing. A fun multi activity day for a range of ages.

	Monday	Tuesday	Wednesday	Thursday	Friday
	09:00 - 16:15	09:00 - 16:15	09:00 - 16:15	09:00 - 16:15	09:00 - 16:15
8 - 11 years	Mountain Bike	Bushcraft	Targets and trajectories	History / Theme Day	Multi activity day
12 - 16 years	Bushcraft	Mountain bike	History / Theme Day	Multi activity day	Targets and trajectories

Price: £30 per person, per day

Ages: 8 - 11 years old
12 - 16 years old

Lunch: Attendees should bring a packed lunch.

For more information or to reserve your place email: info@oxenwood.org.uk

Briefing prepared by:

Ellie Ewing
Marketing and Communications Manager (Community First)
ewing@communityfirst.org.uk

ICB updates for Wiltshire Area Board

Joint Chief Executive appointed to lead region's three acute trusts

A new Joint Chief Executive Officer has been appointed to lead the Royal United Hospitals Bath NHS Foundation Trust, Great Western Hospitals NHS Foundation Trust and Salisbury NHS Foundation Trust.

Cara Charles-Barks, who is the current Chief Executive Officer at the Royal United Hospital in Bath, will take up the new position from Friday 1 November.

This appointment follows a decision by the boards of each of the three trusts earlier in the year to establish a group model to deliver better outcomes for local people.

Before joining the team at the RUH, Cara had previously been Chief Executive Officer at Salisbury NHS Foundation Trust.

She has also been listed as one of the top 50 Chief Executives working in the NHS on five separate occasions.

The new group model is a collaboration between the three existing trusts, and not a formal merger.

Each trust will remain a separate organisation, and continue reporting to its own dedicated executive team and board.

Sue Harriman, Chief Executive Officer, Bath and North East Somerset, Swindon and Wiltshire Integrated Care Board, said: "Cara's appointment is excellent news for our three hardworking acute hospitals and our wider health and care system.

"True collaboration adds real value to patient care and all three hospital trusts have a unique role to play in strengthening the support that local people and communities count on at every stage of their lives.

"Under Cara's expert leadership, our hospitals will be stronger together and I look forward to seeing the benefits of these new arrangements over the coming years."

Public asked to help shape new ten-year plan

Patients, families and staff working across the NHS have been invited to have their say on a new ten-year plan that will aim to revolutionise the entire health and care service.

Wes Streeting MP, Secretary of State for Health and Social Care, announced details of the new plan on Monday 21 October.

He said: "When I was diagnosed with kidney cancer, the NHS saved my life, as it has for so many people across our country.

"Today the NHS is going through the worst crisis in its history. But while the NHS is broken, it's not beaten. Together, we can fix it.

"We need your ideas to help turn the NHS around. Our 10 Year Health Plan will transform the NHS to make it fit for the future, and it will have patients' and staff's fingerprints all over it.

"I urge everyone to go to www.change.nhs.uk today and help us build a health service fit for the future."

The new Change NHS website allows people to submit their ideas and feedback, and also provides details of upcoming in-person engagement events.

Wes Streeting is expected to publish the new ten-year plan in full in the spring of next year. Find out more at www.change.nhs.uk.

ICB awarded Armed Forces Covenant Silver Award

The ICB has been recognised with the Silver Award by the Ministry of Defence for its exceptional support of the Armed Forces.

Recognising organisations that go above and beyond in their support for serving personnel, veterans, and their families, the Silver Award is presented to those who demonstrate their commitment by signing the Armed Forces Covenant and implementing policy changes and workplace adjustments.

The Armed Forces Covenant is a promise that acknowledges and understands that those who serve or have served in the Armed Forces, and their families, should be treated with fairness and respect in the communities, economy, and society they serve, ensuring that their contributions and sacrifices are respected and valued in the workplace.

There is a three-tier approach of bronze, silver, and gold, and the ICB is one of only four others that have recently received the Silver Award.

Sue Harriman, Chief Executive Officer, BSW ICB, said: "As a Royal Navy veteran, I know that those who have served in the Armed Forces are reliable, resilient, resourceful and committed members of our team.

"The Armed Forces community brings a unique and highly valuable set of transferable skills to the NHS.

"They demonstrate key values including compassion and willingness to serve others, which makes them a huge asset to us as we commission services in the area to improve health and enrich lives of the public."

ICB pledges support to council's new SEND strategy

The ICB has pledged its support to a new plan from Wiltshire Council, which sets out how local partners will work with families, children and young people with Special Educational Needs and Disabilities (SEND).

Known as Meeting Needs Together, the ambitious plan was agreed by the Wiltshire Council cabinet at its meeting at the end of September.

The plan contains the following six priorities:

- Children and young people and their families will be at the centre of planning, their views and aspirations heard and acted upon, as true partners
- Getting the right support at the right time, identifying and acting on our children's needs at the earliest opportunity and through promotion of inclusive approaches and practice across the local area
- Provide opportunities for timely planning, reflective of the views of the child or young people and parent carers' current needs, that have clear outcomes
- Ensure good quality communication and information, for families to have a positive experience when navigating services, with information that is easy to access and use
- Professionals and officers across the SEND system will have the skills, knowledge and training to enable effective collaboration across services, joint assessments and sharing of good practice
- Children and young people will be prepared for adulthood and experience timely transitions, leading to increased skills, greater independence and a greater range of opportunities in life

Gill May, Chief Nurse, Bath and North East Somerset, Swindon and Wiltshire Integrated Care Board, said: "One of the priorities of our ICB is to ensure all children have a great start in life, and this new plan sets out in black and white how that promise extends to our young people who live with additional needs and extra care requirements.

"The plan itself is a testament to that commitment, as we've made sure that young voices, as well as those of their parents and carers, are included throughout."

View the strategy in full via the Wiltshire Council website at www.wiltshire.gov.uk.

Wiltshire hospital among best for patient experience

Salisbury District Hospital has been ranked in the top 10 for most improved adult inpatient experience.

Healthcare regulator the Care Quality Commission published the list in its annual NHS Adult Inpatient Survey 2023 Benchmark Report.

The survey covered topics such as experiences of admission to hospital, care in hospital and communication with doctors and nurses.

Other survey questions covered topics including virtual wards, kindness and compassion and support when leaving hospital.

The report noted significant improvements for Salisbury NHS Foundation Trust in the seven areas patients were asked about.

Five of the results were above the national average, with the hospital scoring highly in the following areas:

- Patients getting hospital food outside set meal times
- Quality of the information patients receive while on waiting lists
- Length of time waiting for a bed
- Patients receiving help to eat meals
- Staff explaining the reasons for changing wards during the night

Judy Dyos, Chief Nursing Officer, Salisbury NHS Foundation Trust, said: "We continually strive to improve patients' experiences at our hospital.

"Our staff work tirelessly to provide high quality care to our local population and beyond.

"This CQC benchmark report result is a huge achievement and one for which all of our staff should be proud."

International healthcare leaders hold summit in Salisbury

Healthcare leaders from the NHS, along with many of their European counterparts, have met in Salisbury as part of an annual event that focuses on how to deliver continuous service improvement.

The Catalysis CEO Summit took place at Salisbury District Hospital and provided leading figures from the world of healthcare with an opportunity to learn more about the trust's unique Improving Together programme.

Delegates saw first-hand some of the changes that have been put in place at Salisbury, including what staff have done to dramatically reduce the number of falls that occur while patients are in hospital.

The leaders also visited the new, state-of-the-art Imber Ward, which provides the hospital with 24 additional beds in an environmentally sustainable building.

Lisa Thomas, Interim Chief Executive, Salisbury NHS Foundation Trust, said: "Our aim is always to deliver the highest level of care for our patients, invest in our staff so they have the resources they need and have great working relationships with our business partners.

"I am delighted that we have been able to share just a little of the great work that is going on at our hospital to improve the care we give.

"I could not be prouder of the people who work here and the commitment they make, day in day out, caring for our local communities and each other."

Bradford on Avon Neighbourhood Policing Team

Bradford on Avon Area Board November 2024

Report by SGT 2315 Rutter



Meet Your Neighbourhood Policing Team



PC Jen Miller

Holt
South Wraxhall
Bradford Leigh
Staverton
Monkton
Farleigh
Farleigh Wick
Little Chalfield
Great Chalfield



PC Rachel Jackson

Conkwell
Little Ashley
Winsley
Turleigh
Avon Cliff
Westwood
Wingfield
Limpley Stoke



PCSO Laura Wallace

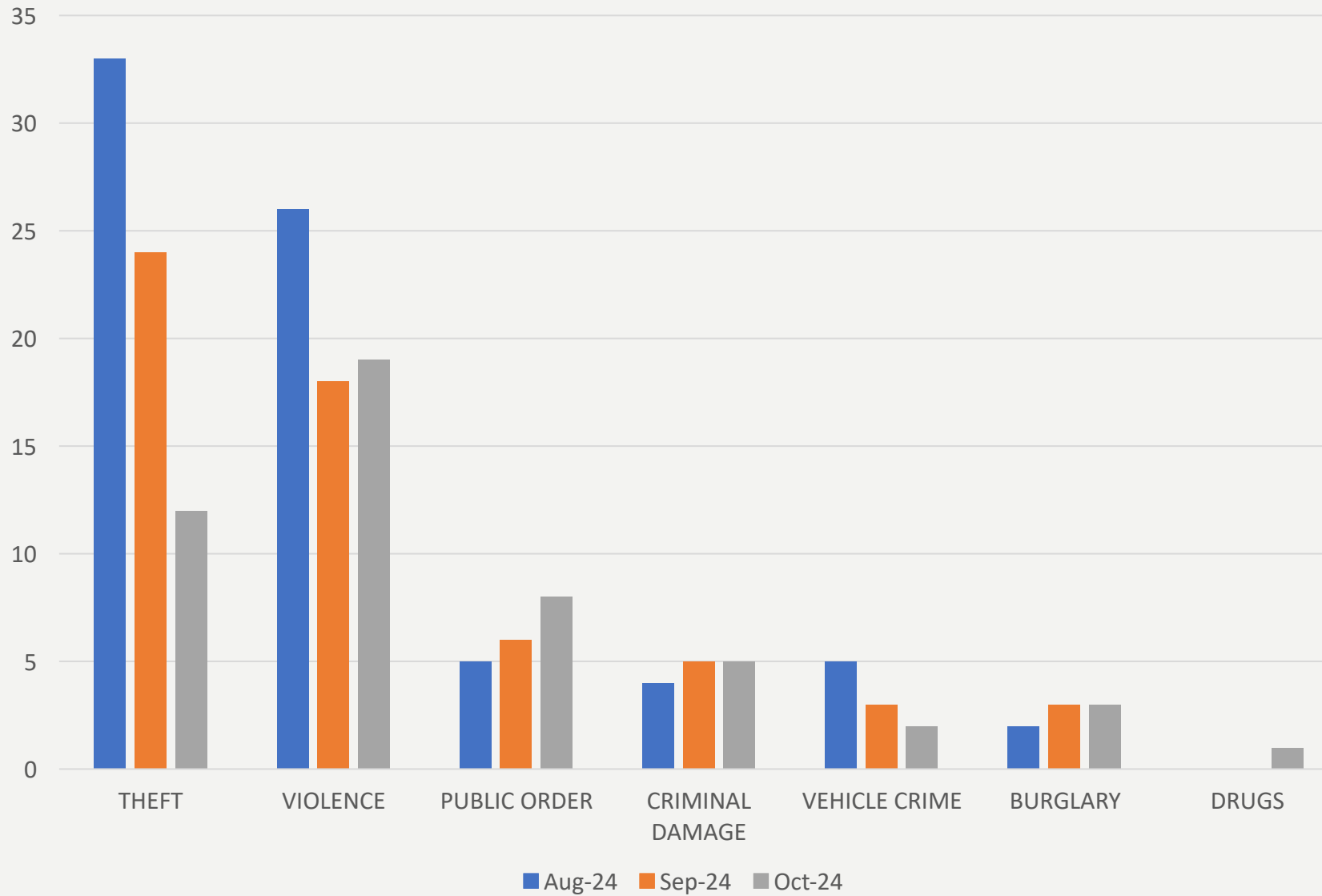


Inspector Andy Lemon



Sergeant Gemma Rutter

Crime Stats Aug- Sept 2023



TEAM FOCUS, ACTION & PRIORITIES:

FOCUS- The team has focused on burglaries within the area. They have provided crime prevention advice online and in our drop-in surgeries. In upcoming surgeries, we will be offering DNA Selecta kits secured through force funding. We have proactively patrolled our areas and are working with a number of teams to pull together evidence and intelligence on inquisitive crime on our area.



ACTION- We have completed three Operations- Op Scorpion, Safer Business Awareness Week and Rural Crime Awareness Week.

For Op Scorpion we targeted criminal transport links with a variety of traffic stops; speed gun duties and patrolling our transport links. We also visited addresses linked to vulnerable people who are at risk of being cuckooed.



For Safer Businesses we have visited our local businesses and invited them to a meeting for each town in our NPT area. This will launch discussions around their needs and expectations and how we can best meet them. We are also liaising with our Neighbourhood Harm Reduction Team to look at ways in which shops can deter, rather than encourage shoplifters with clearer product displays; clear CCTV observation points and moving high value goods to more secure locations.

For Rural Crime Week, we worked alongside the Rural Crime Team and Wiltshire Council to tackle waste disposal offences; checking the legality of our Scrap Metal sites and engaged with our farms to ensure they feel heard and protected.

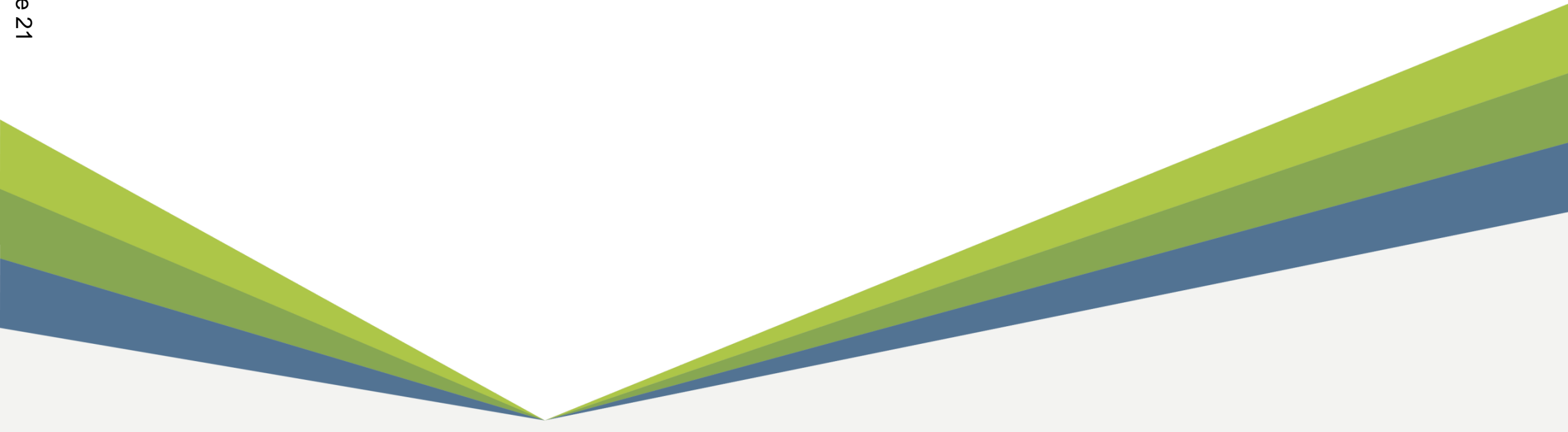


PRIORITIES-

Safer Night Time Economy- we will be working alongside other Neighbourhood Policing Teams to promote safety whilst enjoying nights out in our town. The team will be checking licensing conditions in our pubs; offering Ask Angela education and drink spiking advice.

Retail Crime- We will continue working with our local businesses to increase their feeling of safety whilst working within our town. We will continue to carry out both visibility and plain clothes patrols to enforce, reassure and detect.

Don't forget! We hold a drop in surgery every first Tuesday of the month in The Hub 10am-11am



WILTSHIRE POLICE



Page 23

Road Safety update – Bradford on Avon Area Board

20 November 2024

Keeping Wiltshire Safe



• #FATAL5 education



#KEEPINGWILTSHIRESAFE

#FATAL5



Drink diving

In England, Wales, and Northern Ireland, the legal alcohol limit for driving is 80 mg of alcohol per 100 ml of blood or 35 µg per 100 ml of breath). In Scotland, the limit is lower at 50 mg of alcohol per 100 ml of blood (or 22 µg per 100 ml of breath). Factors such as weight, age, metabolism, and food intake affect how alcohol is processed, making it difficult to predict how much you can drink and stay under the limit. Alcohol takes time to leave your system; common remedies like coffee or showers do not speed this up. You can still be over the limit the next day, risking your license if you drive. Alcohol impairs

driving ability, and the safest choice is to avoid drinking entirely if you plan to drive.

There is no way to know how much you can drink and stay under the limit, since it can depend on your weight, age, metabolism, the amount of food you've eaten and other factors.

It's impossible to get alcohol out of your system quickly, it always takes time. A shower, a cup of coffee or other ways of 'sobering up' may make you feel better but won't remove the alcohol from your system.

If you've been out drinking, you may still be affected by alcohol the next day and could lose your licence if you drive and are still over the legal limit.

Alcohol affects everyone differently and any amount can impair your ability to drive. The only safe option is to avoid alcohol completely if you're driving as even 'just one drink' could put you over the limit. **If you're driving, don't drink any alcohol at all.**

CrimeStoppers.
Speak up. Stay safe.

0800 555 111
100% anonymous. Always.



• #FATAL5 education



#KEEPINGWILTSHIRESAFE

#FATAL5

Drug driving

It's an offence to drive with any of 17 controlled drugs above a specified level in your blood. This includes [illegal and legally prescribed drugs](#).

The limit set for each drug is different, and for illegal drugs the limits set are extremely low. They aren't zero to rule out any accidental exposure (eg from passive smoking).

You should always check with your doctor or pharmacist if you're unsure about whether your prescription or over-the-counter medication will affect your ability to drive.



Risks and physical effects

The biggest risk you take when driving under the influence of alcohol or drugs is the risk of causing a collision.

Driving under the influence of drink or drugs is extremely dangerous and can affect your driving in numerous ways, such as:

- ability to judge speed and distance
- reaction and coordination skills
- blurry or impaired vision
- drowsiness
- aggression
- erratic behaviour
- panic attacks and paranoia
- hallucinations
- nausea
- dizziness
- tremors

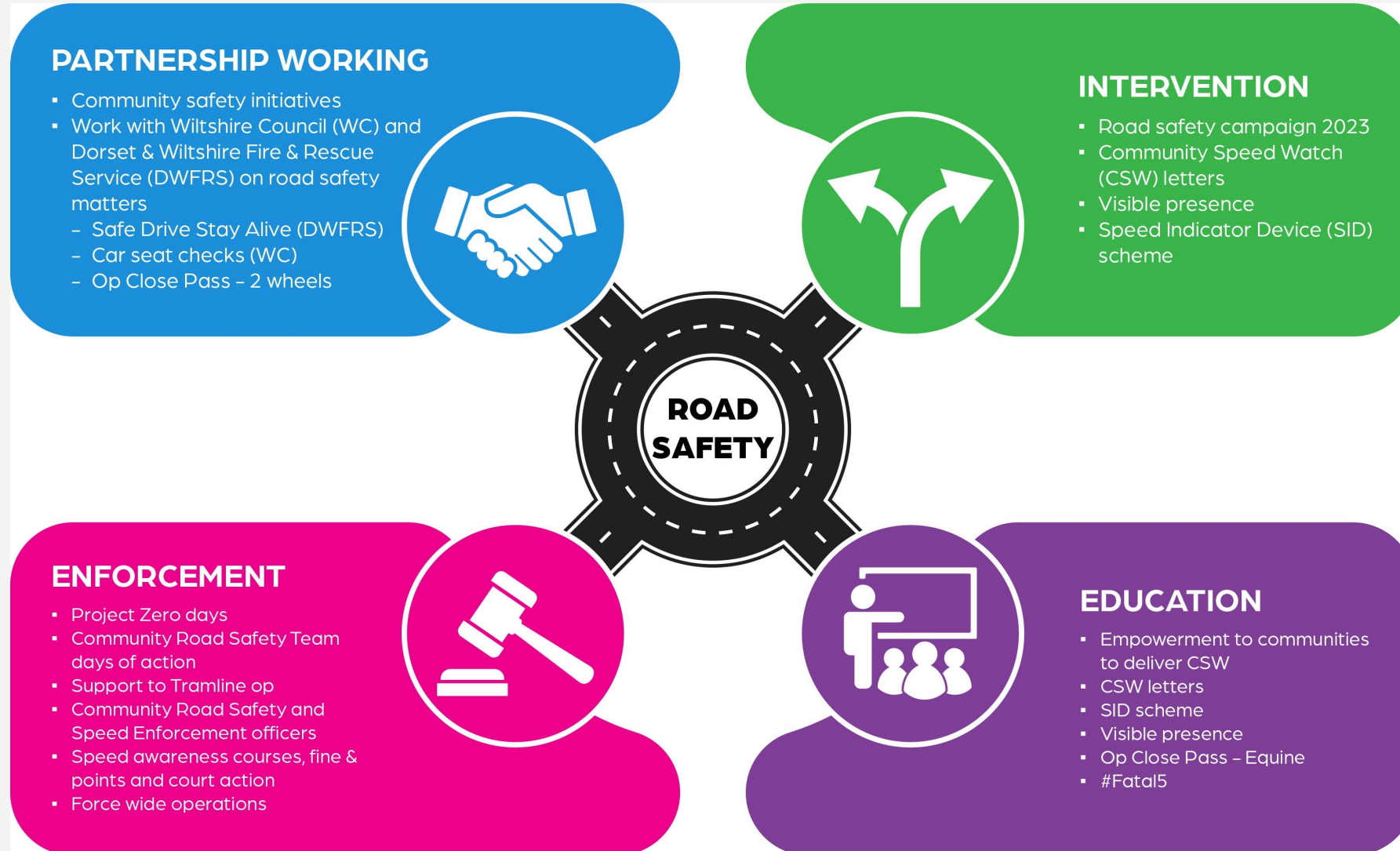
Alcohol and drugs can also create a false confidence which can lead to an increase in risk-taking behaviour, which puts your life and the lives of others in danger.

CrimeStoppers.
Speak up. Stay safe.

0800 555 111
100% anonymous. Always.

999

• Community Road Safety Team; what we do



Traffic surveys – Bradford on Avon 2022 to 20 September 2024

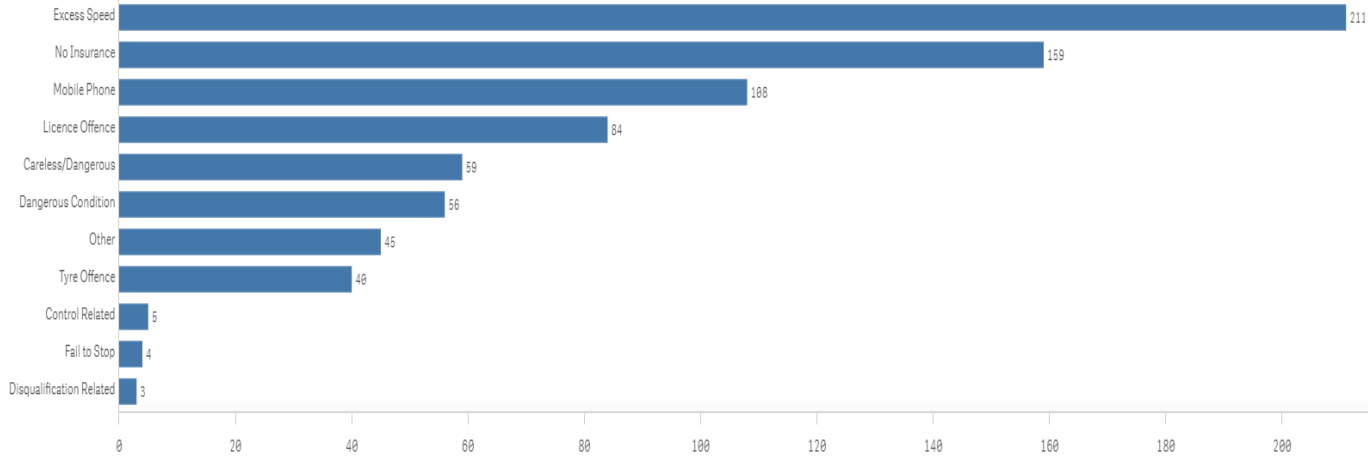
Wiltshire Council

Title	Result	Survey start date	Speed limit	85th percentile	CPT	Area Board
Atworth - A365 Bath Road	No further action	15/05/2023	30	32.4	Trowbridge	Bradford on Avon
Bradford Leigh - B3109 Rushey Lane BOA	No further action	04/02/2023	50	51.4	Trowbridge	Bradford on Avon
Bradford Leigh C224 Leigh Road	No further action	04/02/2023	50	35.1	Trowbridge	Bradford on Avon
Bradford On Avon - Holt Road - Brooklands	Speed education	15/03/2023	30	37	Trowbridge	Bradford on Avon
Bradford On Avon - Holt Road - Cemetery	No further action	15/03/2023	50	41	Trowbridge	Bradford on Avon
Bradford on Avon, B3108 Winsley Road	Speed education	25/04/2022	30	36.99	Trowbridge	Bradford on Avon
Bradford-on-Avon - A363 Frome Road	Speed education	15/04/2024	20	26	Trowbridge	Bradford on Avon
Bradford-on-Avon - A363 St Margaret's Street	Speed education	15/04/2024	20	26.2	Trowbridge	Bradford on Avon
Bradford-on-Avon - A363 Trowbridge Road	No further action	15/04/2024	30	28.7	Trowbridge	Bradford on Avon
Bradford-on-Avon - C230 Turleigh Hill	No further action	15/04/2024	60	32.7	Trowbridge	Bradford on Avon
Bradford-on-Avon - Kingston Road	No further action	15/04/2024	30	12	Trowbridge	Bradford on Avon
Bradford-on-Avon - Moulton Drive	No further action	15/04/2024	30	33.9	Trowbridge	Bradford on Avon
Bradford-on-Avon-Southway Road	No further action	08/05/2024	30	24.4	Trowbridge	Bradford on Avon
Limpley Stoke - B3108 Lower Stoke	No further action	31/01/2022	40	43.45	Trowbridge	Bradford on Avon
Limpley Stoke - Lower Stoke	No further action	31/01/2022	40	43.45	Trowbridge	Bradford on Avon
Staverton B3105 New Terrace	No further action	12/06/2023	30	31.4	Trowbridge	Bradford on Avon
Wingfield - B3109 Bradford Road	No further action	20/03/2023	40	43.1	Trowbridge	Bradford on Avon
Winsley - Dane Rise	Speed education	07/12/2023	20	24.1	Trowbridge	Bradford on Avon

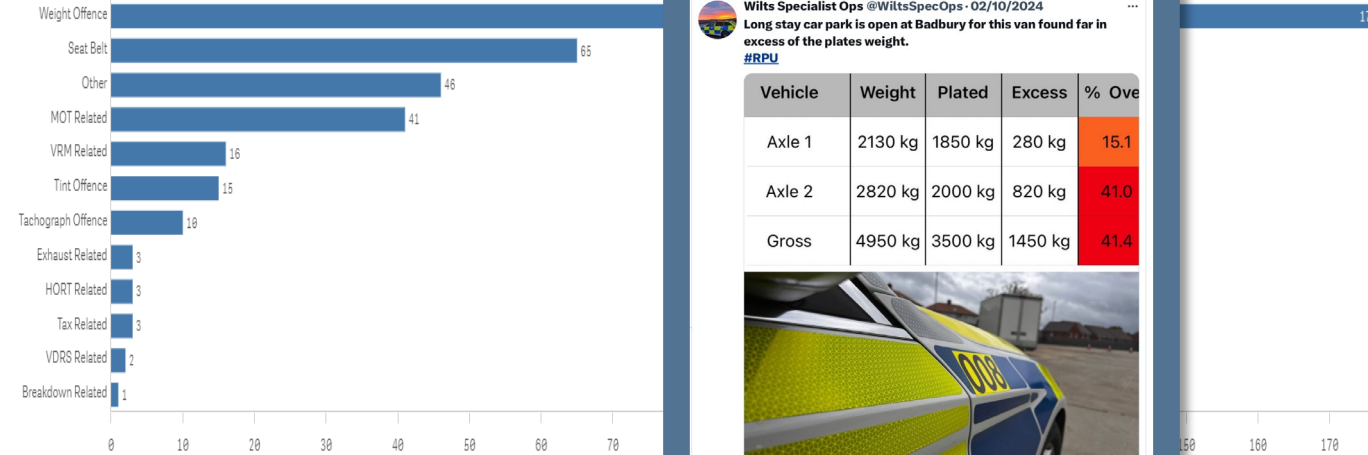
• Wider work recently

Our Roads Policing Unit (RPU) in the last quarter, covering **August to October** issued over **1344 tickets** to motorists, for numerous road related offences. The most common offences they are coming across are as follows:

Activity - Endorsable offences



Activity - Non-Endorsable Offences



Wiltshire Specialist Ops @WiltSpecOps - 20/10/2024
Selection of speeders from around the County today.

Wiltshire Specialist Ops @WiltSpecOps - 19/10/2024
#RPU stopped the transit in Chippenham today after 3 children were seen sharing 2 seats in the front. The MOT expired in 2023 and 2 tyres under the legal limit. Vehicle prevented from moving pending suitable seats for the children and new boots for the van.

Wiltshire Specialist Ops @WiltSpecOps - 02/10/2024
Long stay car park is open at Badbury for this van found far in excess of the plates weight.
#RPU

Vehicle	Weight	Plated	Excess	% Ove
Axle 1	2130 kg	1850 kg	280 kg	15.1
Axle 2	2820 kg	2000 kg	820 kg	41.0
Gross	4950 kg	3500 kg	1450 kg	41.4

Wiltshire Specialist Ops @WiltSpecOps - 27/09/2024
#RPU stopped this driver who was using their phone. He initially tried to say it was a scratch card. He has won a trip to court, where he might lose his licence as he already has 6 points #Fate

Wiltshire Specialist Ops @WiltSpecOps - 24/09/2024
#RPU stopped this van near Marlborough this morning. MOT & tax expired, several defects & driver not on the insurance #reported #OffToCourt #FullHouse @DriveInsured

Community Speed Enforcement Officers

CSEO's



• CSEO – Dashboard – 1 January 2023 to 22 October 2024

CSEO Activity Dashboard

Outcomes are dependent on previous convictions and history

15,227.00
No. Speed awareness co...

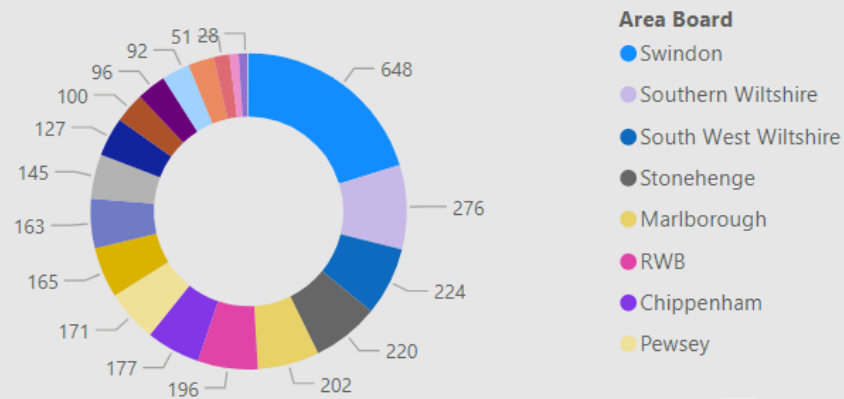
2,000.00
No. Fine & Points

197.00
No. Court

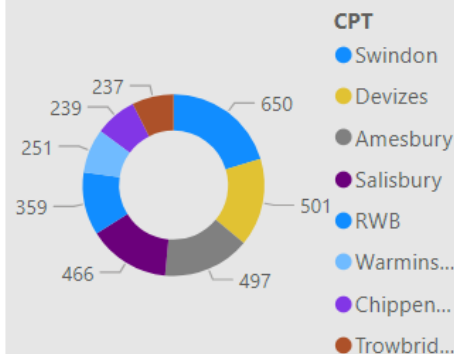
968
No. of Locations

Location	Year	Month	Speed awareness course	Fine & Points	Court	CPT	Area Board
Swindon - Thamesdown Drive	2023	December	251.00	54.00	0.00	Swindon	Swindon
Swindon Queens Drive adjacent with Cambridge Close	2024	April	151.00	26.00	0.00	Swindon	Swindon
Swindon Queens Drive adjacent with Cambridge Close	2024	August	151.00	39.00	2.00	Swindon	Swindon
Shaw and Whitley - A365 Folly Lane	2023	November	129.00	15.00	0.00	Trowbridge	Melksham
Swindon - Thamesdown Drive	2024	May	116.00	25.00	1.00	Swindon	Swindon
Swindon Marlborough Road	2024	May	113.00	6.00	1.00	Swindon	Swindon
Wilton - The Avenue	2024	May	112.00	30.00	9.00	Salisbury	South West Wiltshire
Swindon - Thamesdown Drive	2024	January	103.00	16.00	0.00	Swindon	Swindon
Wilton - The Avenue	2023	August	102.00	31.00	4.00	Salisbury	South West Wiltshire
Swindon Marlborough Road	2024	June	99.00	12.00	0.00	Swindon	Swindon
Harnham - Lime Kiln Way	2023	November	97.00	11.00	0.00	Salisbury	Salisbury
Cholderton - Church Lane	2023	March	95.00	4.00	1.00	Amesbury	South West Wiltshire
Swindon - Thamesdown Drive	2024	March	94.00	23.00	0.00	Swindon	Swindon
Swindon Queens Drive	2024	June	91.00	15.00	1.00	Swindon	Swindon
Total			15,227.00	2,000.00	197.00		

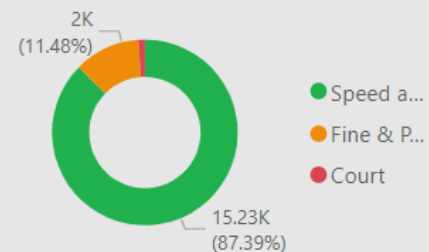
Activity by Area Board



Activity by CPT



Outcomes



• CSEO – Bradford on Avon Area Board - 1 Jan 2023 to 22 Oct 2024

CSEO Activity Dashboard

Outcomes are dependent on previous convictions and history

344.00
No. Speed awareness co...

69.00
No. Fine & Points

5.00
No. Court

25
No. of Locations

Location	Year	Month	Speed awareness course	Fine & Points	Court	CPT	Area Board
Westwood - New Inn	2023	April	29.00	5.00	0.00	Trowbridge	Bradford on Avon
Westwood Site N°5: Bus stop opposite The New Inn public house	2024	October	29.00	4.00	1.00	Trowbridge	Bradford on Avon
Westwood - New Inn	2023	August	28.00	8.00	0.00	Trowbridge	Bradford on Avon
Westwood - New Inn	2023	October	25.00	6.00	0.00	Trowbridge	Bradford on Avon
Westwood - Site N°5: Bus stop opposite The New Inn public house (C)	2024	May	21.00	6.00	0.00	Trowbridge	Bradford on Avon
Westwood - Site N°5: Bus stop opposite The New Inn public house	2024	September	20.00	0.00	0.00	Trowbridge	Bradford on Avon
Staverton New Terrace	2024	April	18.00	2.00	0.00	Trowbridge	Bradford on Avon
Westwood - New Inn	2024	January	16.00	3.00	0.00	Trowbridge	Bradford on Avon
Westwood - Site N°5: Bus stop opposite The New Inn public house (C)	2024	March	15.00	2.00	0.00	Trowbridge	Bradford on Avon
Westwood - The New Inn	2023	April	15.00	4.00	2.00	Trowbridge	Bradford on Avon
Westwood Site N°5: Bus stop opposite The New Inn public house	2024	March	15.00	1.00		Trowbridge	Bradford on Avon
Westwood Site N°5: Bus stop opposite The New Inn public house	2024	February	14.00	6.00	1.00	Trowbridge	Bradford on Avon
Westwood - New Inn	2023	June	13.00	7.00	1.00	Trowbridge	Bradford on Avon
Total			344.00	69.00	5.00		

Activity by Area Board



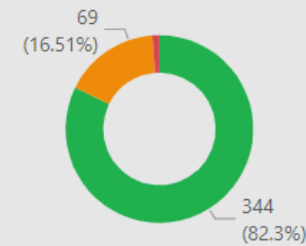
Area Board
● Bradford on Avon

Activity by CPT



CPT
● Trowbrid...

Outcomes



● Speed a...
● Fine & P...
● Court

• Your Force | Your Area | Follow us

For information on Road Safety in Wiltshire visit:
[Road safety campaign | Wiltshire Police](#)

[Road Safety \(wiltshire-pcc.gov.uk\)](http://wiltshire-pcc.gov.uk)



[Bradford on Avon Town | Your Area | Wiltshire Police | Wiltshire Police](#)



[Bradford on Avon Police | Facebook](#)

[Wilts Specialist Ops \(@WiltsSpecOps\) / X \(twitter.com\)](#)

[Wiltshire Specials \(@wiltspolicesc\) / Twitter](#)



Bradford On Avon Area Grant Report

Purpose of the Report

1. To provide details of the grant applications made to the Bradford On Avon Area Board.
 These could include:
 - community area grants
 - youth grants
 - older and vulnerable people grants
 - area board initiatives
2. To document any recommendations provided through sub groups.

Area Board Current Financial Position

	Community Area Grants	Youth Grants	Older and Vulnerable People Grants
Opening Balance For 2024/25	£ 14,160.00	£ 11,528.00	£ 7,700.00
Awarded To Date	£ 12,300.00	£ 9,500.00	£ 6,200.00
Current Balance	£ 1,860.00	£ 2,028.00	£ 1,500.00
Balance if all grants are agreed based on recommendations	£ 1,860.00	£ -472.00	£ 600.00

Grant Funding Application Summary

Application Reference	Grant Type	Applicant	Project	Total Cost	Requested
ABG2005	Older and Vulnerable Adults Funding	Bradford on Avon Dementia Action Alliance	Quarterly Activities Information Leaflet for Seniors	£400.00	£400.00
<p>Project Summary: We produce a leaflet which has up to date information about weekly activities for seniors in the Bradford on Avon area. It also has valuable information about organisations which offer help to seniors. It is an extremely helpful leaflet and is used by many groups.</p>					
ABG2006	Older and Vulnerable Adults Funding	Bradford on Avon Dementia Action Alliance	Christmas Event for Seniors	£500.00	£500.00

Application Reference	Grant Type	Applicant	Project	Total Cost	Requested
<p>Project Summary: We would like to give a Christmas treat to the older folk who come to our Forget me Not Cafes, the people who attend the Chatty Cafe and the older people who attend the Craft and Chat sessions at Christ Church. Our aim is to have an extended Forget me Not Cafe in December where we will have a professional singer from Wiltshire Rural Music to lead some singing of traditional Christmas songs, to have some seated games and fun and to provide a light lunch.</p>					
ABG2023	Youth Grant	Mighty Girls CIC	MG Youth Activities 2024 and 2025	£5000.00	£2500.00
<p>Project Summary: Empowering Bradford On Avon's Youth Overview: We are seeking grant funding to help support our projects in Bradford On Avon over the year, dedicated to enriching the lives of local youth. The funding allows us to offer activities at affordable prices for families, and offer some spaces free for these in receipt of Universal Credit and other financial benefits. Self Defence Workshops x 2: These workshops combine practical self-defence skills focusing on movement, breath work, relaxation, and posture. This holistic approach enhances self-awareness and equips them to cope effectively in various situations. We want to support girls and young women feel empowered and confident and strong! Summer Club (3 Days): Our three-day summer club offers a safe and engaging environment for girls aged 7-15, with empowering, confident building and recreational activities. Girls Skate Park Sessions: Over the spring/ summer, we'll host regular girls' skate park sessions, for girls aged 8-18, encouraging physical activity and building confidence. Your Support: This grant will directly impact the lives of Bradford On Avon's youth, empowering them through education, creativity, and physical activity.</p>					

Background

3. Area Boards have authority to approve funding under powers delegated to them. Under the Scheme of Delegation Area Boards must adhere to the Area Board Funding and Grants Criteria. This document is available on the council's website.
4. Three funding streams are available to the Area Board, each with an annually awarded amount. These funding streams are as follows:
 - Community Area Grants (capital)
 - Youth Grants (revenue)
 - Older and Vulnerable People Grants (revenue)
5. The Area Board will be advised of the funding available prior to their first meeting of each financial year.

Main Considerations

6. Councillors need to be satisfied that the applications meet the requirements as set out in the Area Board Funding and Grants Criteria and that the health and wellbeing and young persons funding guidelines have been adhered to.
7. Councillors must ensure that the distribution of funding is in accordance with the Scheme of Delegation to Area Boards.
8. Councillors need to consider any recommendations made by sub groups of the Area Boards.

Safeguarding Implications

9. The Area Board has ensured that the necessary policies and procedures are in place to safeguard children, young people and vulnerable adults.

Public Health Implications

10. The Area Board has ensured that the necessary policies and procedures are in place to safeguard children, young people and vulnerable adults.

Environmental & Climate Change Implications

11. Grant funding will contribute to the continuance and/or improvement of cultural, social and community activity and wellbeing in the community area, the extent of which will be dependent upon the individual project.

Financial Implications

12. Councillors must ensure that the Area Board has sufficient funding available to cover the grants awarded.

Legal Implications

13. There are no specific legal implications related to this report.

Workforce Implications

14. There are no specific human resources implications related to this report.

Equalities Implications

15. Community Area Boards must fully consider the equality impacts of their decisions in order to meet the Council's Public Sector Equality Duty.
16. Community Area Grants will give local community and voluntary groups, Town and Parish Councils equal opportunity to receive funding towards community based projects and schemes where they meet the funding criteria.

Proposals

17. To consider and determine the applications for grant funding.

Report Author

- Liam Cripps, Strategic Engagement and Partnership Manager, Liam.Cripps@wiltshire.gov.uk

No unpublished documents have been relied upon in the preparation of this report.

Date of Meeting: 21st October 2024 – 16:00 – virtual meeting

1) Attendees and apologies

	<p>Circulation:</p>	<p>Trevor Carbin –(Chair) Wiltshire Councillor Tim Trimble – Wiltshire Councillor Johnny Kidney – Wiltshire Councillor Dean Baker, Kirsty Rose – Highways Liam Cripps – Strategic Engagement Manager</p> <p>Atworth Parish Clerk Bradford on Avon Town Clerk Holt Parish Clerk Limpley Stoke Parish Clerk Monkton Farleigh Parish Clerk South Wraxall Parish Clerk Staverton Parish Clerk Westwood Parish Clerk Winsley Parish Council George Mumford – Westwood PC Liz Watts – Monkton Farleigh PC Pauline Adams – Monkton Farleigh PC Jeremy Wire – Streets Ahead Ian Barnes – Limpley Stoke PC John Barnes – Winsley PC Bella Walker – South Wraxall PC Andrew Nicolson – Cycling UK</p>		
--	---------------------	---	--	--

2) Notes of last meeting				
		Previously circulated		
3) Financial Position				
		2024-25 allocation = £20,764 Current budget available = £7989.00 <u>Allocations made at meeting:</u> A365 Atworth Substantive Bid - £7000 (£3500 LHFFIG / £3500 PC). Dane Rise Winsley - £3800 (£1900 LHFFIG/£1900 PC). BoA Waiting Restrictions - £2210 (£1105 LHFFIG/£1105 TC to be confirmed) Holt, Station Road and Gaston Road Markings - £600 (£300 LHFFIG/ £300 Holt PC). Remaining 2024-25 budget: £1184		
4) Top Priority Schemes				
	Item	Update	Actions and Recommendations	Who
4.1	Wine Street, Bradford on Avon	A prohibition of motor vehicles, except for access, would be appropriate to replace the current 3T weight restriction. 24/07/23 Data provided to Winsley PC. Town Council contribution confirmed. However, please see attached note regarding potential contraflow cycling conflict. The group discussed the potential conflict for contraflow	21/10/24 TRO advert currently underway, with comment period ending 28 th Oct.	To note

		<p>cycling and noted the concerns raised. KR to determine if an short section of marked lane can be provided on bend.</p> <p>Group agreed to proceed with TRO adverts.</p> <p>09/10/23 Plans progressing and TRO to be advertised in due course</p> <p>22/04/24 Awaiting TRO advertisement of proposals.</p> <p>22/07/24 TRO advert to be early August. Dates to be confirmed as soon as possible.</p>		
--	--	---	--	--

5) Substantive Schemes

	Item	Update	Actions and Recommendations	Who
5.1	Berryfield Road, Bradford on Avon	<p>15/01/24 Works at Berryfield Road are programmed in for construction in April 2024.</p> <p>Installation of the advisory 20 on Sladesbrook is complete.</p> <p>22/04/24 Berryfield Road works unable to commence in April due to lack of construction resource. This is as a result of changes with schemes preceding this one.</p> <p>Works are now scheduled for 29th July 2024. KR is to check signing and road markings on Sladesbrook to ensure all installed as planned.</p>	<p>21/10/24 Works are now complete. This item can be removed from the tracker.</p>	To note

		22/07/24 Works to begin at Berryfield Road on the 29 th July.		
5.3	B3109 Lower South Wraxall Junction Visibility Improvements.	22/04/24 Substantive bid successful. Land deal to progress and implementation programmed for February 2025. 22/07/24 Design work to progress for Feb 2025 works. Land deal to be progressed.	21/10/24 Land negotiations being progressed and development of works pack underway.	To note
6) Other Schemes				
	Item	Update	Actions and Recommendations	Who
6.1	Speed Limit Review, Monkton Farleigh	15/01/24 Awaiting TRO advert. KR to provide dates when known. There are no alternative sources of funding for implementation other than LHFIG/PC. The estimated implementation cost is £8500. Funding was agreed subject to 50% contribution from Monkton Farleigh Parish Council. 22/04/24 TRO consultation now complete. Objection received therefore cabinet member report and decision required. KR to progress. The estimated implementation cost is £8500. Funding was agreed subject to 50% contribution from Monkton Farleigh Parish Council. Contribution from MFPC confirmed by LW. Pedestrian in road signs to be included along with signing works.	21/10/24 Cabinet member decision to proceed as advertised has been made. Now to progress to implementation.	KR

		<p>22/07/24 Cabinet member report drafted and officer recommendation is to proceed as advertised. Once signed off, implementation can take place. Works pack being prepared.</p>		
6.2	A365 Atworth	<p>15/01/24 Atworth PC are reviewing the proposal as part of a longer term strategy for improvements in the village. Various issues have prevented completion of review by Parish Council. PT to report back with PC comments when possible.</p> <p>22/04/24 Response to proposal provided by APC. Site meeting to be held 10th May to discuss and determine next steps.</p> <p>22/07/24 Site meeting held and additional options/information provided to parish council (enclosed with note tracker).</p> <p>Atworth PC have considered and meeting arranged for 16th August.</p>	<p>21/10/24 It was agreed to put forward a substantive bid for footway widening and roundabout changes with LHFIG allocating £3500 to this, to be matched by Atworth PC.</p> <p>Note following meeting: Atworth PC have agreed contributions.</p> <p>Substantive bid to be submitted.</p>	KR
6.3	2-22-31 Church Lane, Limpley Stoke – consideration of extending 20mph limit.	<p>15/01/24 Funding was agreed to move this forward to implementation. The overall cost is estimated at £5500 with £1000 allocated by LHFIG and £4500 by LSPC</p> <p>22/04/24 TRO documents with TRO team. Awaiting formal consultation.</p> <p>22/07/24</p>	<p>21/10/24 Cabinet member report drafted and awaiting outcome of decision.</p>	To note

		Formal consultation complete however an objection was received therefore cabinet member report is being drafted.	
6.4	2-22-24 Frome Rd/Chapel Lane Wingfield	<p>15/01/24 A paper prepared by residents was provided to KR ahead of the meeting and circulated to all post meeting. KR to provide feedback to parish council on the points raised.</p> <p>The potential for a speed limit review on the B3109 was discussed. This can include all of the B3109 in the community area for the £2900 fee. Parish Councils to liaise and consider funding for this.</p> <p>22/04/24 Wingfield Parish Council are requesting:</p> <ul style="list-style-type: none"> • A 50% contribution towards the costs (£2500) of a topographical survey to determine if it is possible to undertake any engineering of the B3109 that would enabling the widening of the narrow stretch of pavement close to the junction with Chapel Lane. <p>This funding was agreed.</p> <ul style="list-style-type: none"> • A 50% contribution towards the costs (£2900) of an independent speed limit assessment of the B3109; liaison with South Wraxall Parish Council and Bradford on Avon Town Council would continue as to whether they were interested in participating in & contributing towards the survey. <p>50% contribution from LHFIG agreed. 50% funding from Wingfield PC agreed. Discussions to take place to determine if South Wraxall would be willing to contribute 25% (reducing WPC contribution to 25%).</p>	<p>21/10/24 Topo survey has been received and so design work will now take place. This will include the request for removal of dropped kerbs and additional signing.</p> <p>Plans to be circulated when available and ahead of next LHFIG meeting.</p> <p>Speed Limit Assessment report being finalised by Atkins and will be circulated as soon as available.</p>

		<ul style="list-style-type: none"> A 50% contribution towards the costs (between £300-£520) of deer warning signs. A resident had said they were willing to contribute to the signs, with the Parish Council covering the costs of fixtures and installation. <p>To be brought back to next meeting. WPC to provide location details to KR.</p> <p>22/07/24</p> <p>The topographical survey has been ordered. Once received, design work can begin.</p> <p>The speed limit assessment has been ordered and expected to be complete by September.</p> <p>An estimate for the deer warning signs has been provided to Wingfield PC of £700. The parish council confirmed that they wish to proceed. No LHFIG funding required. KR to raise order with Milestone</p>		
6.5	2-22-26 23-30 St Margaret's St, BoA	<p>Concerns raised regarding vehicle speeds and lack of compliance with the 20mph speed limit. Report of a number of near misses.</p> <p>Would like to see vegetation cut back to improve visibility of signs, improved signing and traffic control measures (traffic calming) and a town-wide 20mph limit.</p> <p>It was agreed that a traffic survey to determine vehicle speeds and volumes be requested to be carried out once the road reopens.</p> <p>15/01/24</p>	<p>21/10/24 KR to arrange site meeting with Tim Trimble.</p> <p>BoA TC are seeking permission from Wiltshire Police to operate CSW in this area.</p>	<p>KR</p> <p>To note</p>

		<p>Repeater signs have been rearranged to be more effective. Network Rail have arranged additional 20mph carriageway roundels to be installed upon completion of all works.</p> <p>BoA TC to request traffic survey through traffic survey request process.</p> <p>22/04/24 Awaiting results of traffic survey.</p> <p>22/07/24 Traffic survey enclosed with tracker. This showed average speeds of 22.3mph and 85th percentile speeds of 26.2mph.</p> <p>KR to arrange site meeting.</p> <p>Town Council to consider deployment of Speed Indicator Device at this location.</p>		
6.6	2-24-02 Lower Stoke, Limpley Stoke	<p>The Parish Council would like to improve pedestrian, cycle and vehicle safety by making clearer instructions to drivers on Lower Stoke. Lower Stoke at this point is designated as a single carriageway with passing places as per the installed blue signs. On entering the village travelling south there is a layby which is used to give way to northbound traffic. However, once past this layby, if northbound vehicles do not give way where there is a wider section (adjacent to the gates to the old station car park), vehicles frequently mount the kerb or enter a 'stand off'. This can and does endanger pedestrians. There have been reports of near misses from van mirrors.</p>	<p>21/10/24 KR explained that due to the current disruption relating to the A36 closure, it would be preferable to revisit this once the closure has been lifted.</p>	KR

		<p>We believe that give way road markings at the point where the road is wide enough for 2 vehicles would make a contribution to overcoming this issue.</p> <p>22/04/24 It was agreed that KR would look at options and report back.</p> <p>22/07/24 A give-way marking cannot be provided as drivers being required to give way do not have forward visibility along the whole narrow section and as such this is likely to increase conflict between vehicles as the opposing flow will expect to have priority but may not have been seen by those heading northbound.</p> <p>The single-track approach with passing place is a common arrangement however if concerns persist regarding pedestrian safety, there may be areas of the footway where additional reboundable posts may be considered however this would not be possible at the narrowest points of the footway as this would reduce the footway width to an unacceptable level.</p>		
6.7	<p>2-22-19 Southville Road/Culver Road/Lodden Way, Bradford on Avon</p>	<p>17/04/23 KR to investigate pedestrian changes at junction and report back to next meeting.</p> <p>24/07/23 KR to review and report back at next meeting.</p> <p>09/10/23 Road markings have recently been refreshed and it is</p>	<p>21/10/24 This item is to be re-enacted and KR to review. Site meeting to be set up.</p>	To note

		reported that this has seen some improvement in driver use of the junction.		
6.8	2-24-04 Dane Rise, Winsley – Request for traffic calming	<p>A speed survey undertaken by Wiltshire Council in December 2023 showed that 85th percentile speeds on this 20mph road met the criteria for consideration of intervention.</p> <p>The Parish Council has agreed, at its meeting in March 2024, that it would ask Highways to outline any traffic calming measures that might be considered on this road, along with ways of more clearly indicating the road’s 20mph speed limit.</p> <p>The Parish Council would like to identify any possible options for traffic calming / making the speed limit clearer on this road, which is well used by pedestrians including families walking to school. Once any options are known, the Parish Council has proposed consulting with residents about preferred options.</p> <p>22/07/24 KR to review what is feasible. Site meeting to be arranged with John Barnes.</p>	<p>21/10/24 See enclosed note. LHFIG and PC contributions agreed. £3800 total (£1900 LHFIG/£1900 PC).</p> <p>To be taken forward to implementation</p>	KR
6.9	2-24-05 Kingston Road, Bradford on Avon	<p>Concerns that pedestrians find it difficult to cross at the informal crossing near the archway due to vehicle speeds and occasional contravention of one-way system. Request that crossing is made more obvious through coloured surfacing, marked carriageway or speed humps.</p> <p>22/07/24 KR to review.</p>	<p>21/10/24 KR to report back at next meeting.</p>	KR

6.10	2-24-06 B3109 South Wraxall	<p>There are multiple road traffic accidents on the B3109 between Bradford on Avon and Corsham where the road has double bends to cross a tributary of the River Avon - the "fishpond bends".</p> <p>Recent road improvements have failed to eliminate the issue and accidents continue to occur in both directions.</p> <p>Southbound the second part of the double bend is a left turn with limited visibility due to a large tree immediately adjacent to the inner curve of the bend. Removal of that tree would open up this bend and improve visibility of oncoming traffic.</p> <p>22/07/24 The key element for review is the removal of the tree which limits visibility. KR to review and report back.</p>	<p>21/10/24 KR to report back ahead of next meeting regarding tree ownership and feasibility.</p>	KR
6.11	2-24-07 South Wraxall Village – request for 20mph speed limit	<p>A traffic survey in 2023 confirmed the high volume of traffic using the roads in South Wraxall. These are rural roads without street lighting or footpaths.</p> <p>In South Wraxall village over 800 vehicles per day with 12% over 35 mph pass through the village sharing the road with pedestrians visiting the pub, village hall, church, bus stop and walkers on the Macmillan Way. The road narrows and visibility is poor.</p> <p>South Wraxall village is subject to a 30mph speed limit. This should be reduced to 20 mph and traffic calming measures installed where the road narrows and the visibility is poor.</p>	<p>21/10/24 Parish Council have agreed funding contribution. Speed limit assessment to proceed.</p>	KR

		<p>22/07/24 LHFIG contribution agreed for 20mph speed limit assessment. Awaiting agreement of contribution from parish council.</p>		
6.12	<p>2-24-08 Bradford Leigh – Speed Limit</p>	<p>A traffic survey in 2023 confirmed the high volume of traffic using the roads in South Wraxall. These are rural roads without street lighting or footpaths.</p> <p>In Bradford Leigh, almost 6000 vehicles per day use the B3109. Over 12% are HGVs. Residents and visitors share this carriageway with passing traffic as there is no verge or footpath.</p> <p>Bradford Leigh is subject to a 50 mph speed limit. The existing Bradford on Avon 40 mph zone should be extended to include Bradford Leigh.</p>	<p>22/07/24 This is included in the B3109 speed limit assessment being undertaken by Atkins.</p>	<p>To note</p>
6.13	<p>Silver Street, Bradford on Avon</p>	<p>Concerns raised regarding damage to building due to vehicle strikes at The Vintners.</p> <p>We’re in favour of Option C from the traffic consultation. Option A had a terrible impact on us during Covid with severe noise pollution from vehicles flying down the hill unrestricted at all hours of the day. At present there is very little traffic from 7pm – 6am.</p> <p>If option C isn’t implemented or takes years to implement, then we need a narrowing in the road as a minimum to move vehicles further out into the road. Similar to what has been done 150m further down the road where there’s another bollard. Historically there was a pavement on our side of the road.</p> <p>This has been on ongoing issue that we’ve raised with</p>	<p>21/10/24 The group discussed the issue and determined that the owner would be asked to remove or replace the bollard with a more suitable alternative and should this be agreed, funding to implement road markings will be agreed at the next meeting in January.</p>	<p>TT</p>

		<p>Wiltshire Council on countless occasions. Eventually a bollard was installed by us (and paid for by us) in November 2023 as the only 'advice' by highways. We raised concerns several times prior to installation that this wouldn't be sufficient, and possibly cause more damage due to potential impact of collisions to a fixed bollard causing more severe structural damage. Removing the bollard again would instead return to constant scratches of our façade.</p> <p>22/07/24 Discussions were had regarding the current issues with vehicles striking the installed bollard. KR explained that it's recommended that the bollard be removed. Hatched road markings may be provided to steer vehicles away from the building line and highlight its presence. The likely cost of this is in the region of £1500.</p> <p>The group determined that due to potential changes in the area and any changes not being of a more wide benefit, funding should not be provided at this time. The resident is encouraged to remove the bollard installed to the front of the property.</p>		
--	--	--	--	--

7) Waiting Restrictions

	Item	Update	Actions and Recommendations	Who
7.1	Bradford on Avon Town – Outstanding Waiting Restriction Requests	<p>22/04/24 Objections have been received to the formal consultation and so a cabinet member decision is required.</p> <p>KR to prepare report and implementation cost estimates ahead of July LHFIG meeting.</p>	<p>21/10/24 Cabinet decision made to proceed as per previous notes. Implementation to be complete by 15th November. Implementation costs of £2210.</p>	To note

		<p>22/07/24 Cabinet report drafted. Officer recommendation is to proceed as advertised with all proposals, with the exception of the following:</p> <ol style="list-style-type: none"> 1. Abandon the proposal for Bridge Yard subject to further discussion with traders. 2. Proposal for Culver Road to reduce length of restrictions to cover a distance of 14m from junction with Trowbridge Road. 	LHFIG contribution agreed. BoA TC contribution to be confirmed.	
7.2	Lower Woolley St / Silver St, Bradford on Avon	Request for residents parking. To be reviewed and proposal advertised alongside other outstanding waiting restrictions.	Included with above	To note
8) Under/Awaiting Construction				
	Item	Update	Actions and Recommendations	Who
8.1	2-22-5 Trowbridge Road, BoA	<p>17/04/23 Proposal to provide 4no reboundable pole cones in the footway between no's 97 and 107 Trowbridge Road to prevent vehicles mounting kerb. Cost estimate £1200.</p> <p>Funding agreed subject to town council contribution.</p>	<p>21/10/24 Works complete.</p>	To note
8.2	Ashley Road, Bradford on Avon - 20mph speed limit	<p>22/04/24 This was subject to formal advert between 8th March and 8th April.</p> <p>22/07/24 Objections received to formal advert. Cabinet member report has been prepared with the recommendation to proceed as advertised. Awaiting cabinet member decision.</p>	<p>21/10/24 Cabinet member decision made to proceed as advertised. Works ordered with implementation date of 2nd December.</p>	To note
8.3	Holt Rd, Bradford on Avon	<p>22/04/24 Consultation complete and cabinet member report required</p>	<p>21/10/24 Cabinet member decision made to</p>	To note

		<p>in relation to speed limit proposal.</p> <p>22/07/24 Objections received to formal advert. Cabinet member report has been prepared with the recommendation to proceed as advertised. Awaiting cabinet member decision.</p>	<p>proceed as advertised. Works order to be raised.</p>	
8.4	2-23-5 Bridge Yard – layby opposite Co-Op	<p>Request for lockable bollards to prevent parking taking place in layby on waiting restrictions which blocks private car park access.</p> <p>24/07/23 Plan and cost estimate to be provided. This will not include lockable bollard provision due to objections from other users of the car park.</p> <p>09/10/23 Proposed change of 2hr parking to loading bay included with waiting restrictions batch.</p> <p>Proposal and estimate included with note tracker.</p> <p>Funding agreed for road markings £600 (£300 LHFIFG/£300 TC). To proceed to implementation.</p> <p>22/04/24 Awaiting installation.</p>	<p>21/10/24 KR to chase lining works from Milestone.</p>	KR
8.5	2-23-13 Bridge St/St Margaret's St, Bradford on Avon	<p>09/10/23 1) No Give way markings on exist to Library carpark onto Bridge st coupled with poor visibility creates the sense that those leaving the carpark have right of way. 2) Issue over cars leaving Bridge St to join the main traffic especially when turning right.</p>	<p>21/10/24 Awaiting installation.</p>	To note

		<p>Request for road markings. Supported by Town Council.</p> <p>Plan and estimate required.</p> <p>15/01/24 Plan showing possible road markings included with note tracker. Estimated cost of implementation is £1500.</p> <p>Funding was agreed subject to confirmation of 50% contribution from BoA TC. (Contribution confirmed post-meeting).</p> <p>22/04/24 Works pack and order issued.</p>		
8.6	2-23-15 Bradford Road Winsley – signing request	<p>Request for ‘road narrows’ warning signs on Bradford Road, Winsley. Please see supporting info.</p> <p>15/01/24 Funding for this was agreed at £1500 (£750 LHFIFG/£750 PC).</p> <p>22/04/24 Works pack and order issued.</p> <p>22/07/24 Awaiting installation</p>	21/10/24 Works complete.	To note
8.7	2-24-03 Horse Warning Signs, Staverton	<p>We keep our horses at Micheal Blake Racing Stables and we often ride along the road towards the train bridge and down School Lane. The traffic is very busy with large lorries and despite being a 30 limit, drivers rarely keep to that speed.</p> <p>Horses from the racing yard cross the road to use the facilities over the road daily and there are no road signs to</p>	21/10/24 Works ordered, awaiting installation.	To note

		<p>warn drivers of horses, coming from Holt or from Trowbridge.</p> <p>We have come across some quite dangerous situations on our horses, or crossing the road with them. In fact tonight whilst crossing a speeding car had to brake very hard to stop in time, it doesn't help we are on a bend either.</p> <p>We would like warning horses road signs placed along this road and signs to remind drivers of the 30 limit.</p> <p>22/04/24 It was agreed that KR would look at possible sign locations and costs and report back.</p> <p>22/07/24 The plan showing the proposed signing location is enclosed with the note tracker. The estimated cost for providing these signs is £550.</p> <p>LHFIG funding agreed at £275. KR to raise order</p>		
8.8	Wingfield Deer Warning Signs		21/10/24 Works ordered. Awaiting installation.	To note
9) On Hold				
	Item	Update	Actions and Recommendations	Who
9.1	2-22-4 Market Street, BoA	<p>Due to the incredibly narrow nature of Horse's Neck section of Market Street and the narrowness of the only pavement there, various vehicles - including vans, lorries and coaches/buses - are mounting the pavement and driving along it endangering pedestrians. Regular traffic jams due to large vehicles trying to pass each other in this section. Ambulances and fire engines have been held up here.</p>	This is now to be considered as part of wider measures following town traffic consultation.	

		Some kind of bollard or series of bollards on or next to kerb; or yellow box to regulate the traffic.		
9.2	2-22-13 New Road Bradford on Avon – Formal Crossing and 20mph Speed Limit Request	<p>Issue: Heavy traffic, limited visibility and high pedestrian footfall has made a formal crossing on New Road essential for pedestrian safety. Regular near-misses are seen by residents, often involving school children (the route is a significant walking route for Christ Church and St Laurence pupils). This is especially the case towards the middle of the route, opposite New Road Express store. The nearest formal crossings are at Mount Pleasant (more than 200m westbound) and Holt Road (nearly ½ mile ast/southbound). Although there is a pedestrian island at the Texaco garage on the Woolley Street junction, the refuge is insufficient and cars rarely stop. A collision is only a matter of time.</p> <p>Request: 1. A formal crossing was designed as part of the traffic mitigation measures during the social distancing scheme and its one-way system. A formal crossing at the Highfield / New Road Express area is highly desirable regardless of the outcome of the traffic consultation.</p> <p>2. A 20mph speed limit throughout the town, including Bath Road, Mount Pleasant, Sladesbrook, New Road, Springfield, Holt Road, Silver Street, Market Street, Masons Lane.</p> <p>The group supported this request but felt that it should be put on hold until a decision has been made by WC/ Cllr McClelland regarding the overall traffic in BoA.</p>	On hold	To note
9.3	2-23-7 St Margaret’s St/Station Approach. BoA	<p>Request for tactile paving to be provided at crossing points around this roundabout and an additional dropped kerb crossing on St Margaret’s Street.</p> <p>Town Council would like this to be funded as a remedial to previous substantive bid.</p>	<p>15/01/24</p> <p>There are no alternative funding sources available. Item to be put on hold.</p>	To note

		<p>24/07/23 Plan and cost estimate to be provided.</p> <p>09/10/23 Proposal and estimate circulated with note tracker.</p> <p>TC and LHFIFG want to see the tactile paving installed but do not feel it should be funded by them as it could have been included in the substantive bid scheme.</p> <p>The group asked KR to investigate any other funding sources.</p>		
9.4	2-23-10 Staverton – Dropped Kerbs Request	<p>I am in a wheelchair and frequently travel from Horse Rd Trowbridge when the Bus drops me off from town. I travel up Canal Rd, (in wheelchair) pass the boats and over the bridge to Maunders Drive</p> <p>.</p> <p>There is no drop down kerb as u travel over the bridge at Staverton from Canal Rd to my flat (on the opposite side of the road) the nearest dropped down kerb (although this is not a very satisfactory dropped kerb) is by the bus stop. I have to Travel over the bridge at Staverton then turn right and find this drop kerb adding extra travelling as I am going in the opposite direction to my flat by quite a long way. There is always a worry my wheelchair will run out of power as I have been to town so travelling in the opposite direction to my flat adds extra stress.</p> <p>I would like a dropped kerb near the bridge.</p> <p>24/07/23 KR to meet with resident to identify location. Plan and cost</p>	15/01/24 Item to be put on hold due to lack of funding available from parish council.	To note

		<p>estimate to be provided.</p> <p>09/10/23 Proposal and cost estimate circulated with note tracker.</p> <p>The group were keen to progress this to implementation however match funding is not available from Staverton Parish Council. It was requested that KR determine if any developer funding is available.</p>		
9.5	2-22-22 Poulton Lane, Bradford on Avon	<p>17/04/23 KR explained that there was likely a substantial cost associated with providing surface improvements. The route does not currently permit cycling and would require a change in legal status.</p> <p>The group asked that this be investigated for feasibility of improvements. KR to investigate. These items may also be considered in the LCWIP development.</p> <p>This route is a ROW but is not part of the highway network or owned by Wiltshire Council. KR to discuss with RoW team</p> <p>24/07/23 The processes relating to legal changes to the RoW to promote cycling were discussed as well as ownership.</p> <p>Improving the route for pedestrians would not require a legal order change but may require consent from land owners.</p>	<p>15/01/24 Land registry information does not show owner details for the section of lane that is not adopted highway.</p> <p>BoA TC to consider writing to adjacent landowners to seek determination of ownership.</p>	BoA TC

		<p>09/10/23 Issue to be placed on hold and pursued through LCWIP process.</p> <p>KR to check land registry information</p>		
10) New Requests				
	Item	Update	Actions and Recommendations	Who
10.1	2-24-09 Hawcroft, Holt	<p>At the entrance to Hawcroft is a grass verge on a bend. In wet weather, and particularly throughout the winter months, the verge becomes cut up by large vehicles, spreading mud across the road (see attached image). Each winter the verge edge has become progressively more eroded. Over-running by vehicles is unavoidable, being caused by the combination of difficulty negotiating the curve in the road and on-street parking (required for 2 Hawcroft which has no off-street provision). Improved access could be achieved, without loss of vital on-street parking, by the addition of a small curb overrun.</p> <p>Installation on the inside of this bend of a paved curb overrun - such as those found at the mini-roundabout on the west entrance to the village (https://goo.gl/maps/8xmUufonBB1jieBq7) - would widen the carriageway sufficiently to prevent verge erosion. Bollards have been discussed with the Parish Council as an alternative, but would not be suitable given the need to accommodate access for larger delivery, municipal and emergency vehicles.</p>	<p>21/10/24 KR to review.</p>	KR

		The Parish Council agree this is an issue at the entrance to Hawcroft and think the proposed solution is a sensible one that the Parish Council supports and recommends.		
10.2	2-24-10 Staverton, Junction of Marina Drive and Cygnet Way.	<p>Inconsiderate parking on Marina Drive directly opposite the Cygnet Way junction causing major issues for drivers, especially when exiting out of Cygnet Way. Request is for yellow lines.</p> <p>Complaints have been received by several residents as larger vehicles have not been able to exit Cygnet Way very easily and it has been difficult to access with oncoming traffic from either way of Marina Drive (Staverton Parish Council).</p>	21/10/24 KR to review.	KR
10.3	2-24-11 B3109 Wingfield Frome Road	<p>There are ongoing concerns from residents and councillors about traffic speed on the B3109 in Wingfield. There are particular concerns relating to families accessing The Mead Primary School on Church Lane, residents having to walk along a narrow stretch of pavement next to the B3109 near to Chapel Lane, and limited visibility at the junction of Chapel Lane itself. Councillors have been liaising with the Highways Engineer about possible measures to make drivers aware of these hazards and to reduce driver speed.</p> <ul style="list-style-type: none"> • Replace school warning signs with school warning assembly signs on yellow boards • Add 'SLOW' markings to the road near the school warning signs • Move the give way lines at the Chapel Lane junction further forward • Remove the dropped kerb outside Turnpike Cottage, Frome Road (B3109) • 40mph roundels on the B3109 (from traffic lights to 	21/10/24 To be included with the existing Wingfield request for footway widening.	KR

		<p>Chapel Lane) to be repainted</p> <ul style="list-style-type: none"> • 20mph roundels on Church Lane to be repainted <p>The first three requests set out above were suggested by Wiltshire Council’s Highways Engineer. Wingfield PC requests 50% funding towards these.</p> <p>Removal of the dropped kerb is to prevent water run-off from the road into the property next to the kerb, and the PC therefore asks that this is a matter for Highways to resolve. The PC asks that renewal of the 40mph & 20mph roundels is undertaken as routine highways maintenance.</p>		
10.4	2-24-13 A363 adjacent to Cumberwell golf club	<p>When cycling on the cycle lanes around Winsley/Conkwell and the bridleway/cycle path that runs through and adjacent to Cumberwell Park golf club and connects these villages to South Wraxall and is an important route to and from Melksham crossing the A363 is dangerous due to the 60mph+ traffic speed and is slow as there are no crossing points. I was waiting for over 10 minutes to cross a few weeks ago and this is getting worse especially with the A36 closure.</p> <p>Reduction in the speed limit before/after this crossing point and installation of a cycle crossing.</p> <p>The lane that leads from Little Ashley to the A363 opposite Cumberwell Park Golf Course is used by pedestrians, cyclists and horseriders. To continue onwards to walking, cycling & bridleway routes towards South Wraxall, walkers, cyclists and horseriders have to cross the A363, which has a 60mph speed limit at this point. The road is busy, and carries a significant number of large vehicles, making it</p>	21/10/24 KR to highlight for inclusion within LCWIP. Signing to be reviewed alongside other requests and KR to report back.	KR

		<p>more difficult and dangerous for those crossing.</p> <p>Winsley Parish Council asks that the 40mph speed limit out of Bradford on Avon is extended to after the junction of the lane from Little Ashley/Cumberwell Park Golf course on the A363.</p> <p>Given the popular walking, cycling and horseriding routes either side of the A363 at this point, the Parish Council requests that the Local Cycling & Walking Infrastructure Plan includes ways of improving the connection between these routes.</p>		
10.5	Holt Gaston – white bar marking	<p>Resident request for a white line to discourage parking opposite the entrance to Gaston Farm. Parked vehicles are making it difficult for large agricultural vehicles to enter and emerge from the farm entrance.</p> <p>Insert white bar marking immediately opposite the farm entrance, allowing enough space for large agricultural vehicles to turn.</p>	<p>21/10/24 Funding agreed for this and Station Road bar markings. £600 total - £300 LHFIG/£300 PC. PC to confirm contribution.</p>	Holt PC
10.6	Holt Station Road – white bar marking	<p>Parked cars causing difficulties for vehicles accessing Chestnut Corner.</p> <p>White line bar opposite the junction with Chestnut Corner on Station Road.</p>	<p>21/10/24 As above</p>	
11) Any Other Business				
11.1				
12) Date of Next Meeting: 27th January 2025 – 4pm Teams.				

Bradford on Avon LHFIG

Highways Officer – Kirsty Rose

1. Environmental & Community Implications

1.1. Environmental and community implications were considered by the LHFIG during their deliberations. The funding of projects will

contribute to the continuance and/or improvement of environmental, social and community wellbeing in the community area, the extent and specifics of which will be dependent upon the individual project.

2. Financial Implications

2.1. All decisions must fall within the Highways funding allocated to Bradford on Avon Area Board.

2.2. If funding is allocated in line with LHFIG recommendations outlined in this report, and all relevant 3rd party contributions are confirmed, Bradford on Avon Area Board will have a remaining Highways funding balance of **£1184**

3. Legal Implications

3.1. There are no specific legal implications related to this report.

4. HR Implications

4.1. There are no specific HR implications related to this report.

5. Equality and Inclusion Implications

5.1 The schemes recommended to the Area Board will improve road safety for all users of the highway.

6. Safeguarding implications

